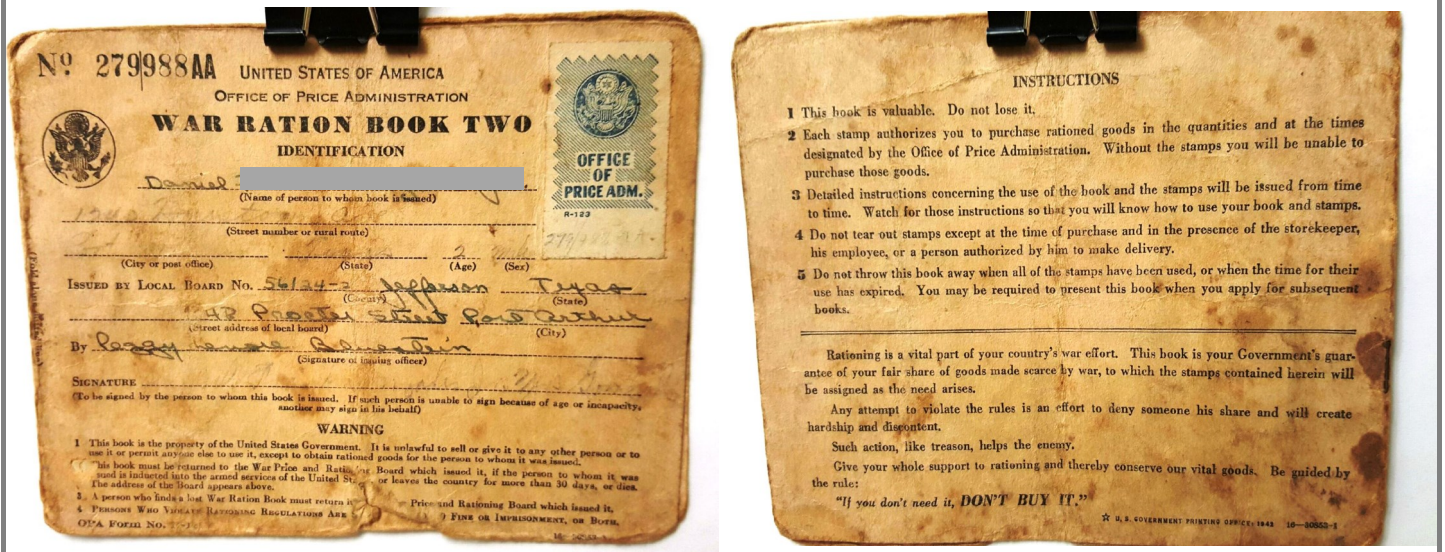


After World War I ended, farms had been affected because workers had been called off to war. Voluntary conservation after World War I wasn't going to be enough to support war as the United States entered World War II. The U.S. government decided to ration certain items to discourage hoarding of food and to provide an equal distribution. Americans couldn't purchase sugar without government-issued coupons. Coffee, meat, cheese, fats, and canned milk were also rationed. This time period in American history called upon women to be not only workers outside the home, but creative cooks and bakers with limited ingredients.



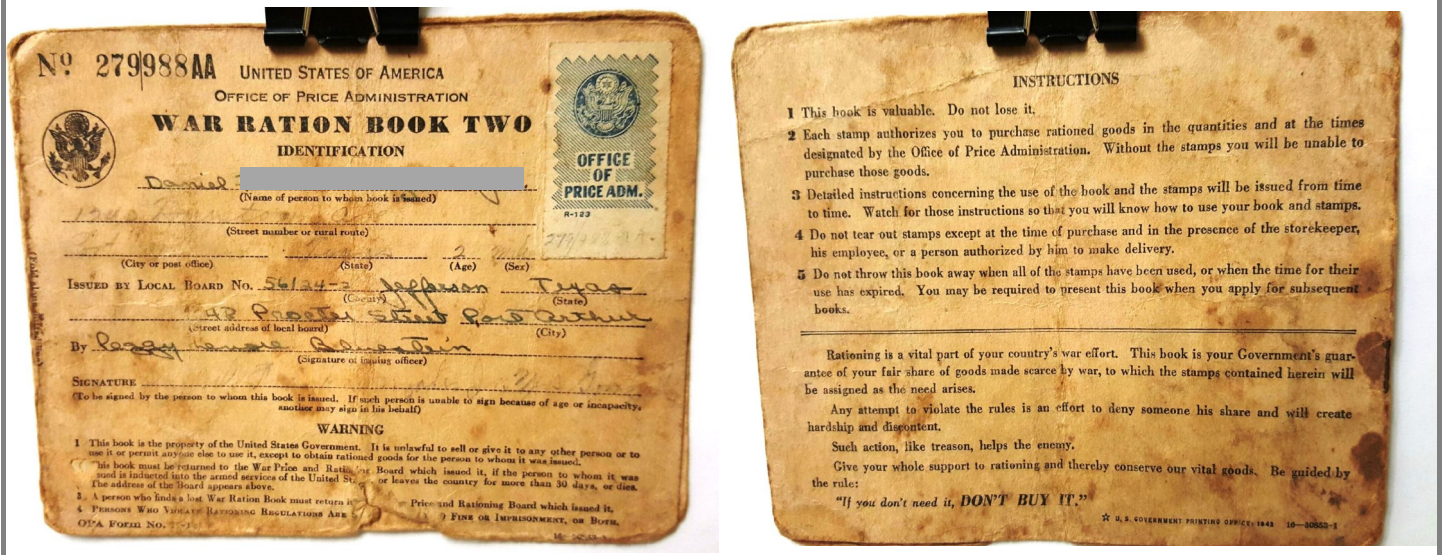
Cut out book above and add your own research. Fold in half and glue title at the bottom on the outside .

Life During
the War



For most all of my minibooks, I have two versions of this same minibook. Print one version that is blank to write in your own research or use the one with premade information. .

Blank lined writing area for student research.



Cut out book above and add your own research. Fold in half and glue title at the bottom on the outside .

Life During the War

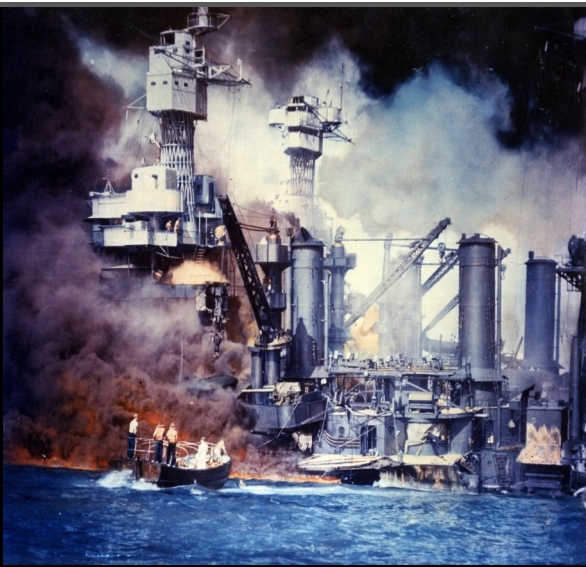


For most all of my minibooks, I have two versions of this same minibook. Print one version that is blank to write in your own research or use the one with premade information. .

attack, attack, attack

"Yesterday, December 7, 1941 – a date which will live in infamy . . ."

Pearl Harbor



"Yesterday, December 7, 1941 – a date which will live in infamy the United States of America was suddenly and deliberately attacked by naval and air forces of the Empire of Japan.

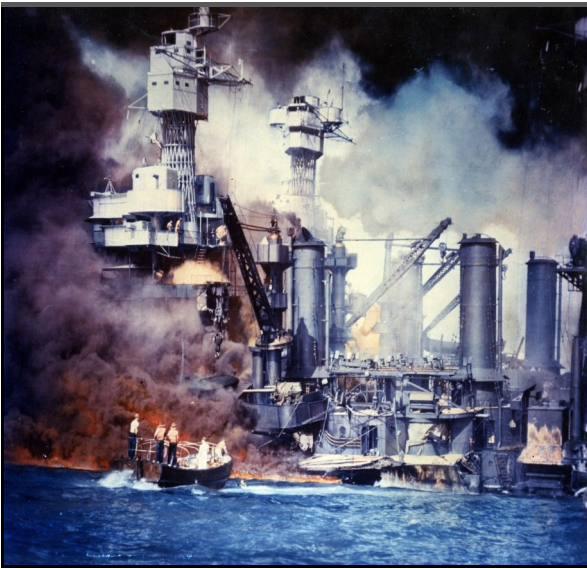
facts

Early in the morning on December 7, 1941, two waves of fighter planes or kamikaze (meaning divine winds) pilots attack Pearl Harbor and 2,386 Americans are killed and 18 ships are sunk or run aground.

attack, attack, attack

*"Yesterday, December 7,
1941 - a date which will
live in infamy . . ."*

Pearl Harbor



facts