

*Santa Ana Winds*

*Shamal Winds*

*Sirocco Winds*

*Gregale Winds*

*Haboob Winds*

*Matanuska Winds*

Cut out book as a whole piece.

With this part facing toward the back, fold the right side over and in, then the left side (cover page) over and in and crease well.

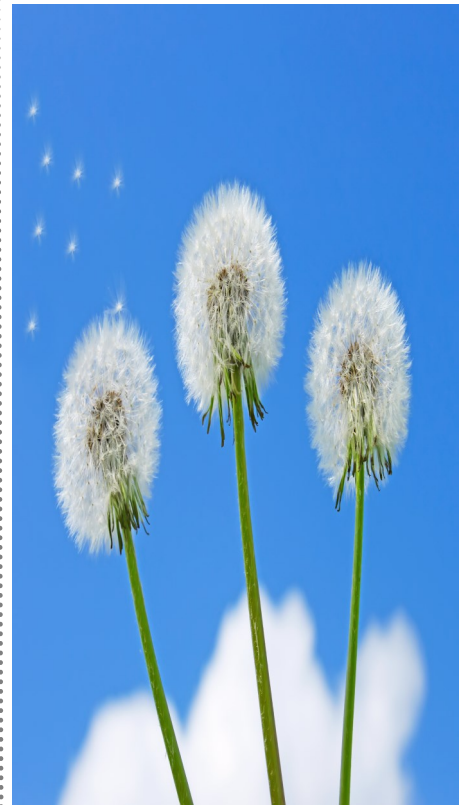
After creasing, cut on solid lines to form 6 lift tabs on the right side.

Use the information on the next page to glue under the correct tab and learn about winds.

Or have your older child write about each wind under the correct lift tab.

Glue this middle part to your page.

# EXTREME WINDS



The Santa Ana winds in southern California are strong, hot winds that blow from the desert to Santa Ana Pass and out into San Pedro Channel beyond Los Angeles.

The Shamal winds are summer winds that blow over Iraq and the Persian Gulf.

The Sirocco winds are warm winds that blow over the Mediterranean Sea from the Sahara Desert.

The Gregale wind is a strong and cold wind that blows from the northeast in the western and central Mediterranean area mostly in winter.

Haboob is a strong wind that occurs primarily along the southern edges of the Sahara in Sudan and is associated with large sandstorms and dust storms.

Matanuska is a strong, gusty, northeast wind which occasionally occurs during the winter in the vicinity of Palmer, Alaska.