

Machu Picchu

Lost City of the Inca



Staple cover here

1

The Inca lived in the Andes Mountains in what is now Peru. They controlled a large empire from the 1400s until 1533. The empire centered around Cuzco (KOOZ-koh), the Inca's mountain capital city.



2

By 1500, the empire extended 2500 miles along the west coast of South America. The Inca built complex cities like Machu Picchu. To farm the steep land, they cut terraces into the mountainside.



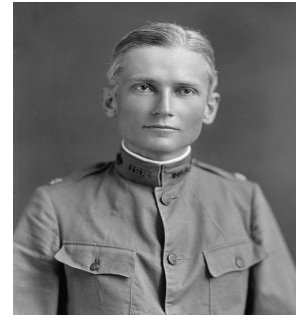
3

They grew corn and potatoes. They built aqueducts or canals to irrigate the land. On the higher ground they grazed llamas. At the height of its power, the Inca Empire rivaled that of the Roman Empire at its peak. Weakened by smallpox and civil strife, the Inca fell



4

to the Spanish in 1532. After less than 100 years of rule, the Inca Empire was destroyed. The ruins of Machu Picchu, the magnificent "lost city of the Inca," were finally discovered by archaeologist Hiram Bingham in 1911.



Cut out cover on first page, and staple onto this page.

Fold this page up to bottom of gray area. Fold in half here.

Be sure you do not staple the part folded up when you staple on the front cover. This page should fold down to read the story.

Also, when you staple the cover page on, the top of that page and this page do not line up. The cover page is made to be slightly larger to cover the story.