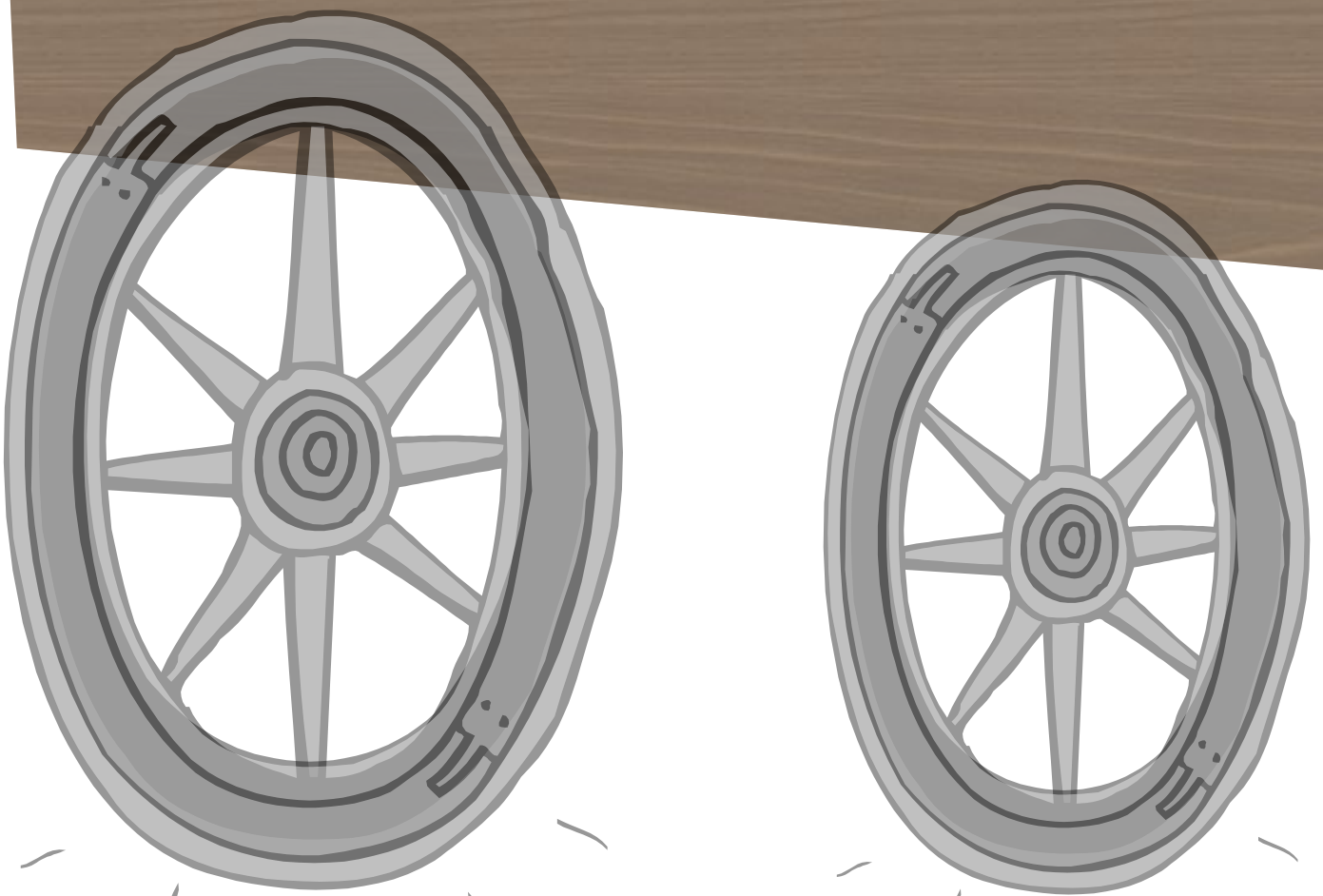


Cut out prairie schooner on solid black lines, ALONG with this tab as one piece. Then fold tab back and down. Glue the inside of tab only to the TOP CENTER and outside of lapbook. <http://www.hsiz.org/>

The Oregon Trail

For side tab. Fold back OR Cut off if you use bottom tab.



For bottom tab. Fold down OR Cut off if you use side tab.

Instructions for wagon flaps.

Because some of you might be adding several extensions to your lapbook, the bottom of this two piece wagon will open two different ways.

One way will be from the top of the wagon and pull down and the other way the wagon will open from right to left. This depends on which flap is available on your file-folder.

The top flap or sail opens *only* from the bottom of the sail and lift up.

First option Use BOTTOM of your file folder to glue wagon.

*Place sail or canvas at **center top** of your file folder.*

Place wagon at bottom and slightly to the left under sail. Cut off side tab and use bottom tab ONLY. (Tip: The front of the wagon which is the right should stick out slightly beyond canvas it should not be centered over the whole wagon.)

Fold bottom tab of wagon down and back. Glue inside the tab and glue to the bottom outside part of your file folder.

Wagon will open from inside file folder and down.

Second option Use SIDE of your file folder to glue wagon.

*Place sail or canvas at **center top** of your file folder*

Place wagon all the way to the left under sail. Cut off bottom tab and use SIDE tab ONLY. (Tip: The front of the wagon which is the right should stick out slightly beyond canvas it should not be centered over the whole wagon.)

Fold side tab of wagon back. Glue inside the tab and glue to the outside and to the left side of your file folder.

Wagon will open from left to right.



<http://www.hsiz.org/>

You have two choices for the fan books on the following pages:

Use the facts on the next page if you are running short on time or research your own and add to fill in the fan book starting on page 9.

Page 12 has a blank page so that you can prepare your own questions for your children.

OR

A fan book or rebus fan book starts on page 13 for non readers OR for those who prefer pictures instead of words.

<p><i>Who were the Pioneers?</i></p> <ul style="list-style-type: none">• Emigrants or persons who leave one area and move to another.• They left the midwest and headed west.• With 2000 miles of harsh land in front of them, one of the folk sayings on the Oregon Trail was "The cowards never started and the weak die on the way."	<p><i>Where were they going?</i></p> <ul style="list-style-type: none">• They were heading to the land of plenty called The West.• Oregon Territory.• Five states that made up part of the Oregon Territory of 1840 were Oregon, Washington, Idaho, parts of Wyoming and Montana.• They would stop at Dalles or Oregon City.
<p><i>Why did they go to Oregon?</i></p> <ul style="list-style-type: none">• There was free land, forests, rivers, and streams for food and building supplies.• They had Oregon fever. It was a "disease" that made them restless, a need for wide open spaces and eager for adventure.• It was called the land of opportunity.• Since Thomas Jefferson's presidency, people believed that the United States should stretch from coast to coast.	<p><i>How did they get there?</i></p> <ul style="list-style-type: none">• They took their wagons, horses, oxen and sometimes a cow and walked.• They followed the ancient Indian footpath used by explorers and fur traders.• Today you can still see the ruts made by wagons almost a century ago.

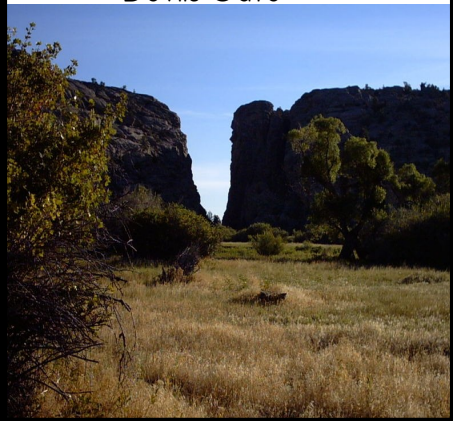
Landmarks
Along
The Trail

Independence Rock



With pictures facing down and blank side facing up.
Fold in right flap.
Then fold in left flap.
Fold up bottom flap and bring down top flap .
Glue this to your page.

Devils Gate



Chimney Rock

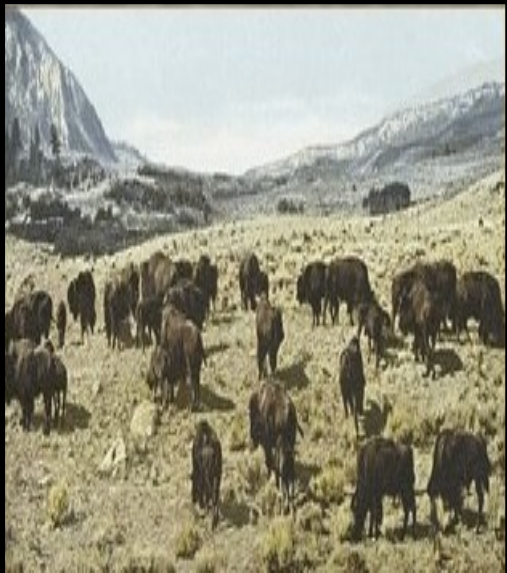
DISEASE ON THE TRAIL



Define Cholera.

Handwriting practice lines for the definition of Cholera. The lines are organized into four sets, each consisting of a solid top line, a dashed middle line, and a solid bottom line.

Travel Along The Trail



What was The Oregon Trail?

Handwriting practice lines consisting of multiple sets of three horizontal lines (top, middle, and bottom) for writing practice.

Who were the Pioneers?

Where were they going?

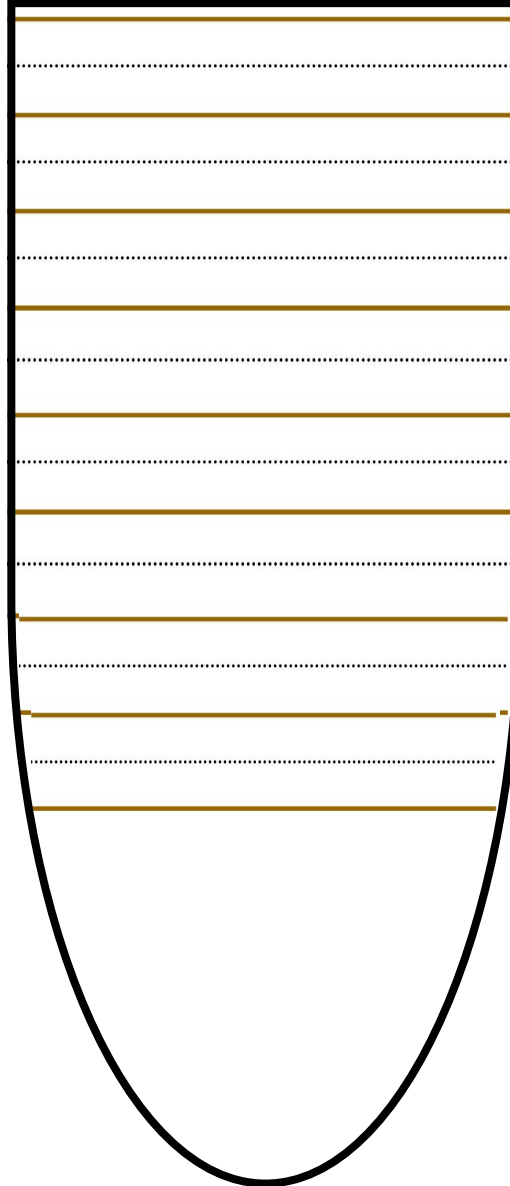
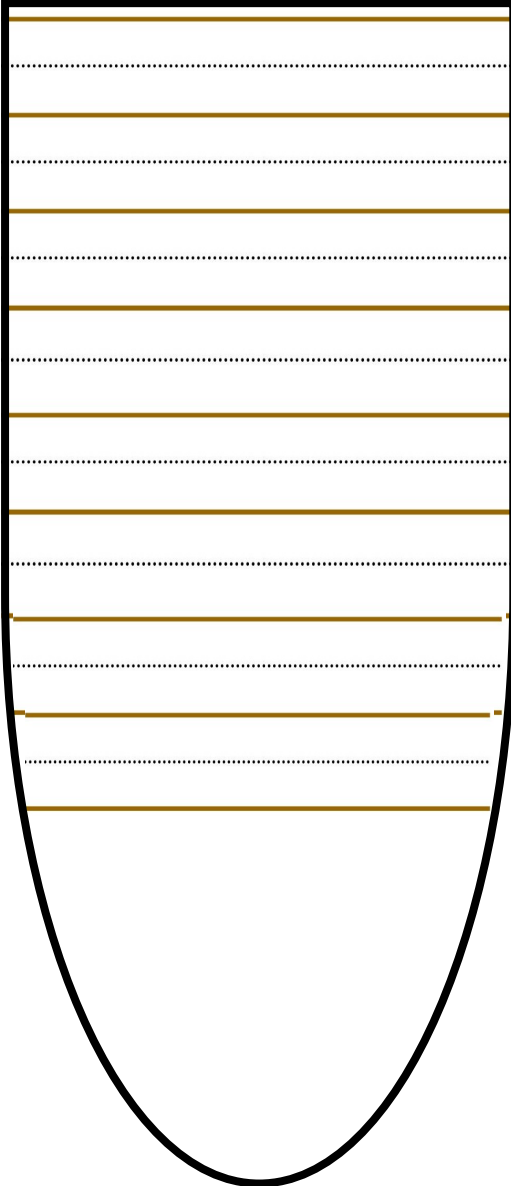
How did they get there?

A series of horizontal lines for handwriting practice, consisting of solid top and bottom lines with a dashed midline. There are 10 such sets of lines, each spanning the width of the left column.

Why did they go?

A series of horizontal lines for handwriting practice, consisting of solid top and bottom lines with a dashed midline. There are 10 such sets of lines, each spanning the width of the right column.

When did they leave?



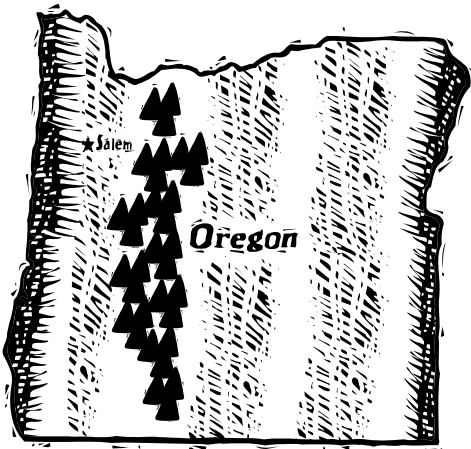
What was The Oregon Trail?



Who were the Pioneers?



Where were they going?



How did they get there?



Why did they go?



When did they leave?

