

BEFORE YOU PRINT - Two Choices for the same book.

Cut out and staple at top left.

1st choice has info added- page 2 and 3

2nd choice add your own info - pages 3 and 4



Plants of the Rain Forest



Heliconia

Heliconia also known as lobster-claw and false bird-of-paradise flowers come in a wide variety of sizes and colors. Also called parrot flowers because of their beak like bracts (leaf structure at bottom of flower). The bracts keep the sweet nectar tucked away so that only specialized birds like hummingbirds can reach them for their nectar.



Bromeliads

Bromeliads are a varied group of plants. The foliage takes different shapes, from needle thin to broad and flat, symmetrical to irregular, spiky and soft. The foliage, which usually grows in a rosette, is the most widely patterned and colored of any plant in the world. The pineapple is the most well known bromeliad.



Orchids

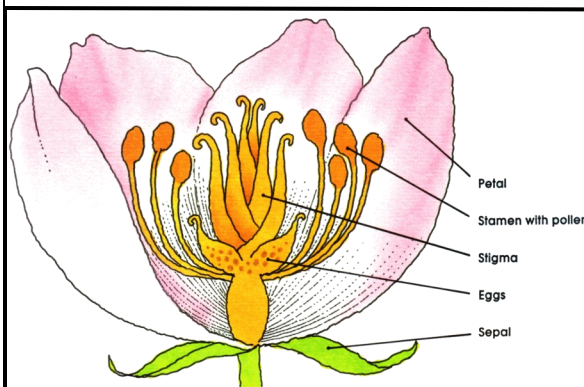
Orchids are known particularly for their beauty and their strong aroma. They are plentiful in the rainforest. Their roots are able to quickly absorb water and nutrients. Another quality that makes orchids so widespread is their thousands of tiny seeds, which can be carried all over the rainforest by the wind.



Lianas

Creepers, vines and lianas (woody vines) are abundant in the canopy. They range from small vines that grow against the tree to giant lianas thick as trees that grow in the middle as though they are independent of trees. Rattan is a liana, well known for its use in furniture and ropes.

Plant Biology





Plants of the Rain Forest



Heliconia



Bromeliads



Orchids



Lianas

Plant Biology

